

Membership Fees

- **No joining fees**
- **Pay in advance or pay monthly by direct debit**
- **Option for a reduced weekday membership**
- **Save with a joint membership**
- **Join as a family - junior memberships available**
- **Bring a guest - adults £10, children £5.50**
- **Open every day of the year***

Single Weekday Membership from £45 a month

This allows access to the Club's facilities between the hours of 8am and 4pm, Monday to Friday.

Pay in advance: 6 months for £295 | 12 months for £540

Pay by direct debit: £54 per month, based on a 12 month contract.

Single Full Membership from £58 a month

This allows access to the Club's facilities at all opening times.

Pay in advance: 6 months for £362 | 12 months for £696

Pay by direct debit: £64 per month, based on a 12 month contract.

Joint Full Membership from £50.88 per person per month

This membership is for two people living at the same address or for two immediate family members and allows access to the Club's facilities at all opening times.

Pay in advance: 6 months for £657 | 12 months for £1,221

Pay by direct debit: £118 per month, based on a 12 month contract.

Single Junior Full Membership from £18.75 per person per month

This membership is for guests aged 0 to 15 years inclusive. All junior members up to the age of 14 years must be accompanied by an adult. Junior members are not allowed in the gymnasium and are subject to the restrictions listed in the Club rules on page 15.

Pay in advance: 6 months for £115 | 12 months for £225

Pay by direct debit: £22 per month, based on a 12 month contract.

Please note:

If paying by monthly direct debit your appropriate monthly fee will be debited from your account on the first working day of each month. 30 days written notice is required to cancel direct debit payments. You can pay in advance for a 6 or 12 month period. Please note that refunds are not given once payment has been made. All prices include VAT at 20%. *The Leisure Club closes for 5 days every year for essential maintenance. You will be given as much advance notice as possible of these dates.

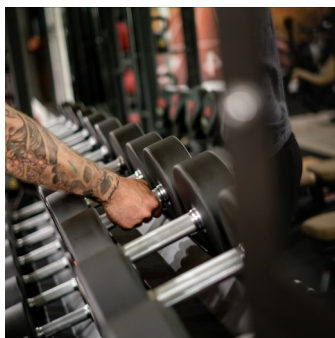
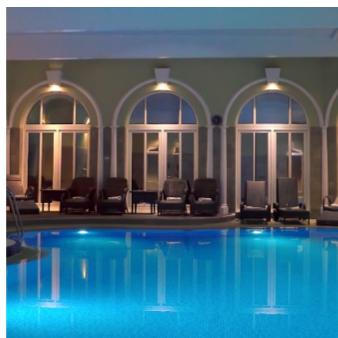
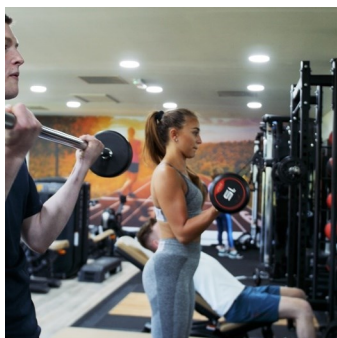
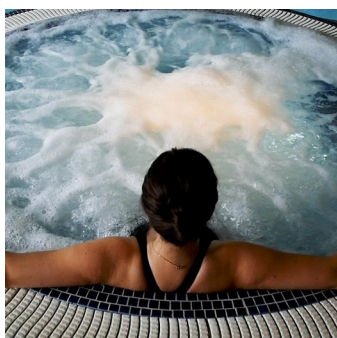
Be fitter, happier & healthier at Moor Hall Leisure Club & Spa

Become a member of Moor Hall Leisure Club & Spa and you'll enjoy the best in fitness and relaxation facilities coupled with comprehensive support and guidance from friendly, professional and well-trained staff.

Whatever your age or level of fitness we will assess your individual needs and develop an exercise programme to suit you within the cost of your membership. You'll be encouraged to achieve your personal best and most importantly to enjoy the challenge!

Membership facilities include an indoor heated pool, spa bath, sauna and steam room for relaxation. The newly refurbished air-conditioned gym overlooks the surrounding parkland and is equipped with new high-end cardio machines and a functional training area. Members can join a full programme of fitness classes throughout the week and the Spa Lounge is the perfect place to relax and enjoy a coffee with other members after a class.

The exclusive membership benefits include discounts on hotel dining, spa treatments and guest passes.



MH
Leisure Club & Spa